

Ancient Egypt around the Museum

ASHMOLEAN

This trail is designed for self-guided school groups and avoids the main Egypt Galleries when taught sessions are taking place.

Go to Gallery 1, Exploring the Past, Floor - 1.

Find these objects made from Papyrus and label them:



b _ _ _ _



r _ _ _

What else could you use Papyrus for?

Find what looks like a net nearby.

This is actually part of a leather kilt worn by an Ancient Egyptian Soldier thousands of years ago.
Draw it here.

Find a creamy white mug on a high shelf.

This mug is made of alabaster a beautiful stone that lets light through.

Unscramble the letters to find the technical word for this...

SCANTRUNTLE

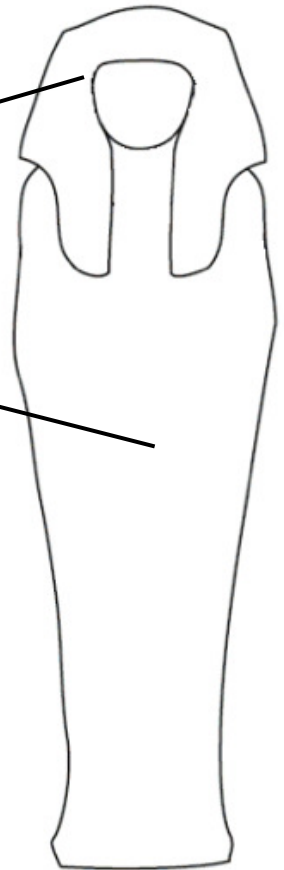
Stay in Gallery 1, Exploring the Past.

Find this jar, made from a material called Faience.



Find this small figure nearby. It's a Shawabti! (A magical servant)

Draw in the face and some of the hieroglyphs



What do you think was kept in this jar?.....

Go to Gallery 3, Restoring the Past



Find this cosmetics pot. Which part of it do you think could be missing?

.....

Look at the pot next to it for a clue!

Stay in Gallery 3, Restoring the Past

Find an animal nearby from Egypt. What is it?

.....

Go to Gallery 4, Conservation

Draw your favourite Egyptian object from this room:

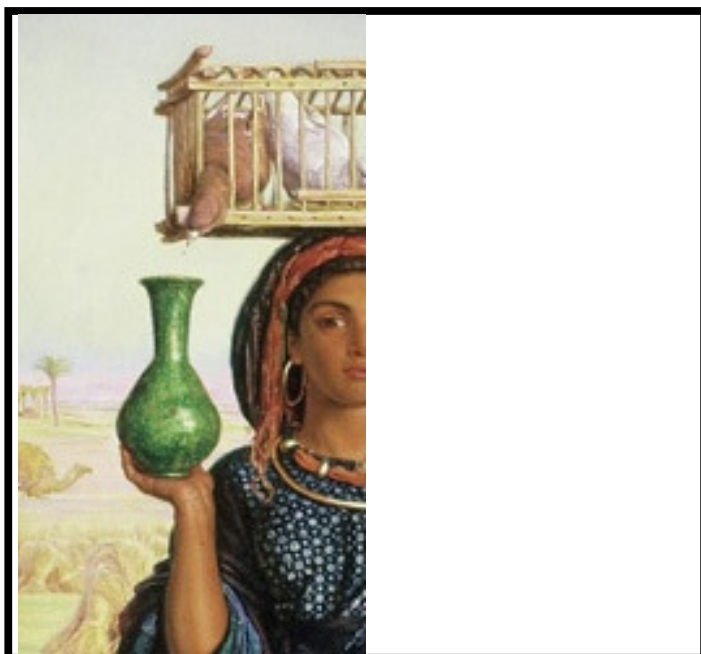
Go to Floor 3M, Gallery 66, Pre-Raphaelites

Find this painting in the gallery. Look closely.

- What is the lady carrying?
- Describe what she is wearing?
- What animals can you see?
- Where do you think the lady is going?
- What do you think the man is doing?
- Which country do you think this could be?
- What time of day do you think it is?
Why do you think that?
- If you could step into the painting what would you hear and smell?

Find another painting of Egypt on this wall. What animals can you see in the river? _____

Have a go at finishing the picture...



This painting is called 'Afterglow in Egypt'. It was painted by William Holman Hunt in 1861.

? What did you like best on your visit today and why?